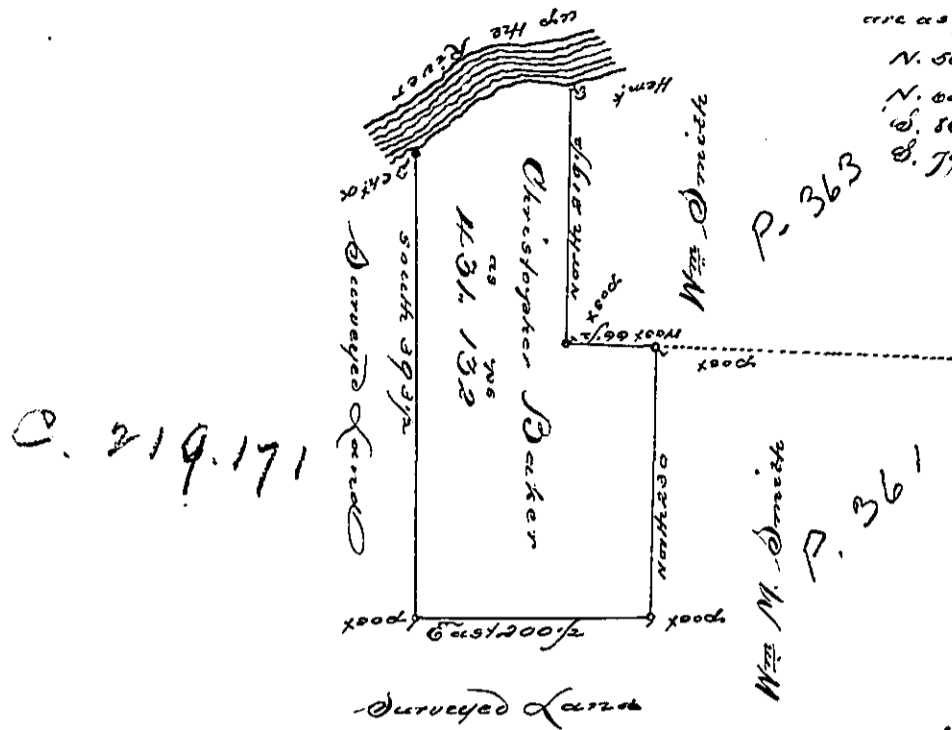


Courses & Distances down the River

are as follows
N. 50. E. 75
N. 60. E. 28
W. 86. E. 24
S. 79. E. 29



Situate on the South side of the West Branch of Susquehanna River about four miles above the Mouth of big Moshannon Creek in Frankstown Township Huntingdon County Containing four hundred and thirtyone Acres one hundred and thirty two perches and the usual allowance for roads. Surveyed the 9th day of September 1794 for Christopher Baker in pursuance of a warrant dated the 21st day of July 1792.

John Canan D.S.

Daniel Brodhead Esq.
D.S.

for Wt see No 904 N.C.

IN TESTIMONY that the above is a copy of the original remaining on file in the Department of Internal Affairs of Pennsylvania, made conformably to an Act of Assembly approved the 16th day of February, 1833, I have hereunto set my Hand and caused the Seal of said Department to be affixed at Harrisburg, this first day of February 1898,

James W. Latta
Secretary of Internal Affairs.